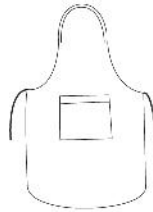




Tessuto leggero



S657 Grembiule unisex

100% Cotone. Pettorina e tasca anteriore centrale. Fettucce sottili.
F.to cm 90x60



S657-0

Imballi: 10/200

€ 3,50



Tessuto pesante



S654 Grembiule unisex

100% Cotone. Pettorina.
F.to cm 80x70



S654-0



S654-1



S654-4



S654-6



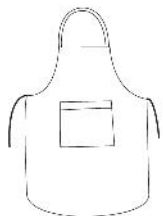
S654-20



S654-76

Imballi: 10/100

€ 8,00



Tessuto pesante



S664 Grembiule unisex

100% Cotone. Pettorina e tasca anteriore centrale. Fettucce sottili.
F.to cm 60x90



S664-0

Imballi: 25/150

€ 5,57



S653 Grebiule uomo

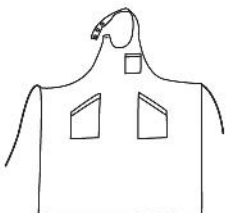
65% Poliestere, 35% Cotone. Pettorina, tasche anteriori e taschino.
F.to cm 100x86



S653-1 S653-42

Imballi: 10/50

€ 11,30



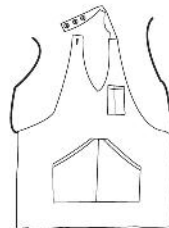
S652 Grebiule donna

65% Poliestere, 35% Cotone. Pettorina, tasca anteriore centrale e taschino.
F.to cm 57x70



Imballi: 10/50

€ 10,29





S660 Grembiule unisex

100% Cotone Canvas. Pettorina e tasca anteriore.
F.to cm 69x83



S660-42 S660-91

Imballi: 10/50

€ 10,15



S659 Grembiule lungo unisex

65% Poliestere, 35% Cotone.
F.to cm 96x94



S659-1

Imballi: 10/50

€ 7,60



T051 Portabicchieri

100% Cotone Canvas. Soffietto alla base.
F.to cm 16,5x22



T051-42 T051-91

Imballi: 10/300

Naturale: € 1,55

Colorato: € 1,90





S658 Grebiule corto unisex

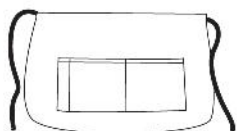
100% Cotone. Tasche anteriori.
F.to cm 52x34



S658-1 S658-42

Imballi: 10/100

€ 5,80



S655 Grebiule corto unisex

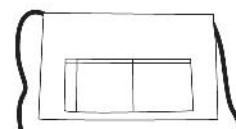
100% Cotone. Tasche anteriori.
F.to cm 71x39



S655-0 S655-1 S655-7 S655-42

Imballi: 20/200

€ 5,00



jeans



S661 Grebiule corto in jeans

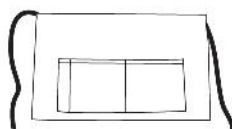
100% Cotone. Tasche anteriori.
F.to cm 69x39



S661-27

Imballi: 10/100

€ 4,54





S663 Grebiule donna

65% Poliestere, 35% Cotone. Due tasche anteriori ed anello portachiavi.
F.to cm 63x70



S663-4/1 S663-6/1

Imballi: 10/50

€ 8,09



S662 Grebiule/Casacca donna

65% Poliestere, 35% Cotone. Tasca frontale.
F.to cm 73x70 Fronte - 71x52 Retro



S662-4/1 S662-6/1

Imballi: 10/50

€ 10,34

